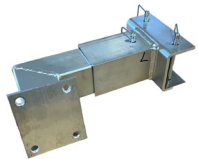


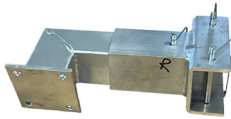
## ASSEMBLY INSTRUCTIONS

# TRANSPORT PACKAGE

### PARTS INCLUDED:



(2) LEFT WHEEL BRACKETS



(2) RIGHT WHEEL BRACKETS



(2) NON-SWIVEL WHEELS



(2) SWIVEL WHEELS



(16) BOLTS



(16) WASHERS



(16) LOCK NUTS



## 1 Unpack and check all contents

If there are any missing or damaged parts, please contact your authorized DSI retailer.

## 2 Attach the wheels to the brackets

Use four bolts, four washers, and four lock nuts for each wheel bracket. Attach a swivel wheel to a left bracket AND a right bracket. Then attach a non-swivel wheel to the other left bracket AND the other right bracket.

EXAMPLE OF NON-SWIVEL WHEEL ON BRACKET (LEFT FRONT)



TRANSPORT PACKAGE SHOWN ON THE 6' COMMAND CENTER PODIUM



Place each bracket on the correct side of the podium while placing the flat part of the bracket on the floor BEFORE attaching wheels. The non-swivel wheels go on the front of the podium and the swivel wheels go on the back of the podium (as shown in the photo).