

HOW CAN YOU "ENGINEER" A MARCHING JACKET?

Every Band Shoppe marching jacket is built utilizing precise pattern grading and construction, leading to enhanced appearance and comfort, and a longer life span for each uniform. From the smallest to largest size, our patterns are mathematically proportioned to ensure that every member of your band receives the best fit available.

A look inside the Band Shoppe marching jacket.

Customization Up:
 1. Collar trim
 2. Functional or non-functional epaulets
 3. Rivet Back Buttons
 4. Sleeve Style
 5. Waist Style

ITEM #IA8170
 SHELL 100% polyester
 ZIP Back

- BUTTONS = Silver Lined
 - MAIN BODY = As noted
 - COLLAR = C-1
 - EPAULETS = Functional
 - SLEEVE = S-1A Adjustable

BAND SHOPPE MARCHING JACKET	SIZE 36R	JACKET NO. #IA8170	DRAWING NO. 42 13 4215
	SCALE 12/1	UNIT WT.	SHEET 1 OF 1

CHANGE THE LOOK OF YOUR NEXT CUSTOM MARCHING JACKET!

Customizing an already existing jacket pattern is a great way to help your group stand out from the crowd without breaking the bank. Change buttons, waist styles, collars, epaulets, wings, and canopies on most jackets listed throughout the custom section. To get started, call one of our Sales Representatives and they will walk you through the ordering process. All quotes include free design service with full color sketches and fabric swatches to help you visualize the end result.

BUTTONS

Choose:

- ☐ Gold // Rivet Backed
☐ Silver // Rivet Backed



BASIC WAIST STYLES



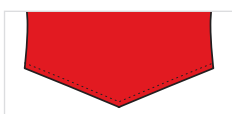
Our marching jackets utilize several front styles. Waist styles may be changed on most jackets.



F-ST Straight



F-DP Double Point



F-SP Single Point



F-SSP Shallow Single Point



F-JP Jagged Point



F-NTCH Notched Front



F-HP Hook Point



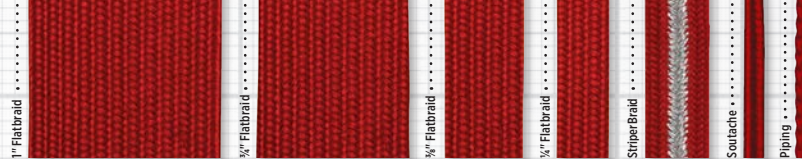
F-SCP Scoop Front



F-LW Long Waist

BASIC TRIM & BRAID STYLES

Matches all colors of our 100% Polyester.



COLLARS

Choose:

- ☐ **Soft Collar** // Allows for a full range of movement
- ☐ **Mylar Collar** // Gives a clean, structured look



The styling and application of a collar is an important part of any garment because it serves as the frame for your face.



C-1 Plain



C-2 Piping or Soutache



C-3 Flat Braid



C-4 Striper Flat Braid



C-5 Double Piping



C-6 Trefoil Trim



C-23 Filled Trefoil Trim



C-18 Trim & Buttons



C-1 with Embroidery



C-7 Wrap Collar with Button



Epaulets may be omitted from most jackets, unless overlays, sashes or capes will be used by your band.

EPAULETS

Choose:

- ☐ **Functional** // A MUST if using overlays, capes or sashes
- ☐ **Non-Functional** // Epaulet is sewn down for a polished look



E-1 Plain



E-2 Piping or Soutache



E-3 Flat Braid



E-4 Striper Flat Braid



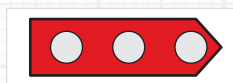
E-5 Double Piping



E-6 Trefoil Trim



E-14 Tubular Trim and Piping



E-7 Three Buttons



E-8 Plain Squared



E-7 Squared with Three Buttons

CUFFS

Choose:

- ☐ **Adjustable Snap Hem** // Allows for easy, no-sew sleeve hemming
- ☐ **Standard Hem** // Allows for a completely tailored look for each performer



Add style and visual interest to your uniform without the hassle or bulk of gauntlets.



S-1 Plain



S-2 Pointed with Piping



S-3 Pointed with Flat Braid



S-4 Pointed with Trefoil



S-6 Pointed with Piping and 1" Stripe



S-7 Squared with Piping



S-8 1" Stripe with Flat Braid



S-9 1" Stripe with Trefoil



S-11 Squared with Piping and 1" Stripe



S-14 1" Stripe with Trefoil and Piping



Canopies and Wings may be added to or omitted from most jackets.

CANOPIES & WINGS

Choose:

- ☐ **Soft Wing** // Allows for a full range of movement
- ☐ **Mylar Wing** // Gives a clean, structured look



Plain



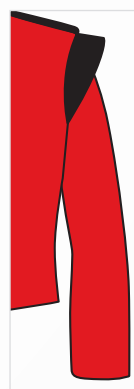
CS-2 SQUARE
CP-2 POINTED
CL-2 SEAMLESS
Canopy with Binding



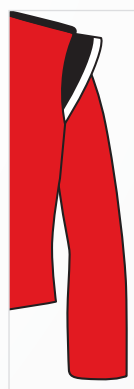
CS-3 SQUARE
CP-3 POINTED
CL-3 SEAMLESS
Canopy with Flat Braid



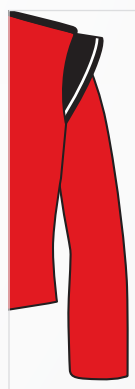
CS-4 SQUARE
CP-4 POINTED
CL-4 SEAMLESS
Canopy with Striper Flat Braid



WS-1 Plain



WS-2 Binding



WS-3 Piping
or Soutache



WS-4 Double
Piping



Speak with your Sales Representative for more uniform customization options!